

# ecom-B

Flue Gas Analysis in Miniature Size.



100% Calibration



Safety First



All Inclusive



Shock Proof



## ecom-B

Compact, robust, light-weighted

### Product Features

- Up to 3 gas sensors (Longlife)
- $\pm 100$  hPa differential pressure measurement (option)
- IR interface for ecom-P thermal printer (option)
- Soot measurement via soot pump (option)
- Backlit display
- Optical condensate monitoring
- 3-chamber tubing, coaxial sampling probe and T-Room sensor
- Emission, temperature and draught measurement without plug connection change
- Internal memory for 300 measurements
- ecom PC software
- Comprehensive accessory program

### Measured values

- O<sub>2</sub> (0-21%)
- CO (0-4000 ppm)
- Gas temperature (0-500°C)
- Air temperature (0-99°C)
- Pressure ( $\pm 100$  hPa)

### Options:

- Differential pressure ( $\pm 100$  hPa)
- CO extended range (0-10.000 ppm)
- NO measurement (0-5000 ppm)



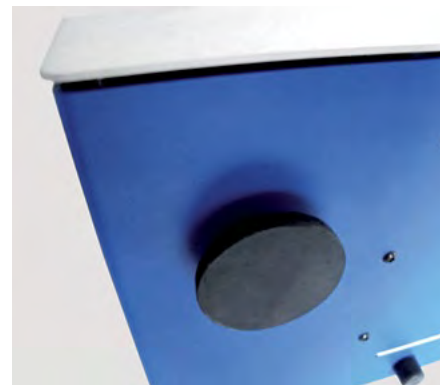
look at page 2



High-value aluminium housing



Shoulder carrying strap and bag (accessoires)



Powerful magnets for positioning on metal surfaces

### Calculated Values

CO<sub>2</sub>, CO<sub>(undiluted)</sub>, NO<sub>x</sub>, losses, efficiency (0-120%), dew point, mg/kWh, mg/m<sup>3</sup>, adjustable O<sub>2</sub> ref.

### Display

- LC display, 70 x 40 mm, max. 8 lines
- Graphic-capable
- Backlit for easy reading also in the dark

### Sampling Probe

- Coaxial probe 150 mm
- 3-chamber tubing 1.5 m
- Fixation cone

### Measurement Gas Preparation

- Condensate trap with exchangeable moisture-absorbing pad

### Operation Safety Features

- Temperature trend indication for core stream search
- CO switch off without measurement interruption by exceeding of pre-set limit value
- Automatic fresh air purging by CO exceeding
- Automatic fresh air purging after measurement
- Optical condensate monitoring
- Longlife sensors
- Integral battery with extended lifespan

### Data Processing

- Internal memory for 300 measurements
- Integral sending diode for external IR printer
- Bluetooth interface (option)
- Data exchange with ecom PC software

### Power Supply

- Battery/Mains power
- Including charger

### Dimensions / Weight

- Approx. 250 x 180 x 80 mm (L x H x W)
- Approx. 2.1 kg (complete)



EN 50379-2 and 1st BimSchV approved

## ecom-B Flue Gas Analysis in Miniature Size

Item-Nr.	Description
102802	<b>ecom-B</b> , flue gas analyser with O <sub>2</sub> and CO -H <sub>2</sub> -compensated- sensors (both Longlife sensors) Complete with battery, fitted in aluminium housing with fixing magnets on the back, sampling probe 150 mm with fixation cone, 3-chamber tubing (1.5 m), T-Room sensor with cable and fixation cone, operation manual on USB drive, calibration certificate –issued after 100% calibration in calibration chamber. PC software for data management downloadable free of charge from <a href="http://www.rbr.de">www.rbr.de</a>
102819	<b>NO measurement (0-5000 ppm)</b> . At choice with or without NO <sub>x</sub> calculation.
3140300	<b>ecom-P</b> - infrared printer for documentation of measured values (incl. printer paper roll and one-way batteries)
102884	<b>Tubing for differential pressure measurement</b> (1.5 m)
102888	<b>T-Room stick</b> - PT 2000- H 28 x ø 11 mm
10166	<b>T-Room probe</b> – Length 260 mm with 3 m cable
102852	<b>Shoulder carrying strap</b> – black, length-adjustable
102851	<b>Textile carrying pouch</b> - black, with storage compartment for consumables, with zipper, approx. 24.5 x 30 x 8 cm. Instrument fitted in pouch can be positioned on metal surfaces
102883	<b>Shoulder carrying strap + textile carrying pouch set</b> - as above described (at attractive set price)
50538	<b>Soot pump set</b> - Consisting of soot pump, soot comparison scale, tube of piston grease, socket wrench and 200 soot papers
102776	<b>Condensate pads</b> – pack of 5 pieces
31000043	<b>Data cable -&gt; PC</b> (RS 232)
51521	<b>Adapter cable</b> USB / RS 232 (requires 31000043)
100965	<b>Universal CO multi-hole probe</b> – telescopic, 80–280 mm
100943	<b>Universal O<sub>2</sub> multi-hole probe</b> – telescopic (80-280 mm) with three easily exchangeable sealing plugs for measurement openings from Ø 5 to 25 mm.



[See video on rbr-website](#)