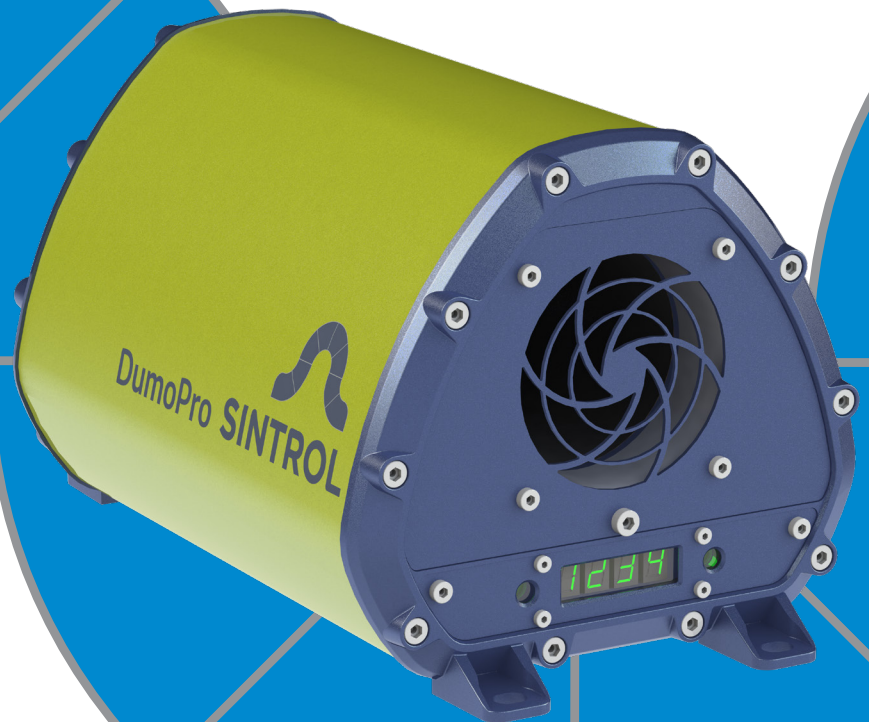


PRODUCT BROCHURE

DumoPro

Continuous Ambient Air Dust Monitor



Low maintenance real-time
monitoring of total suspended
particles in industrial
environments

Designed to industrial
standards with built in failsafe
features to increase reliability



SINTROL
Measuring Matters

Features:

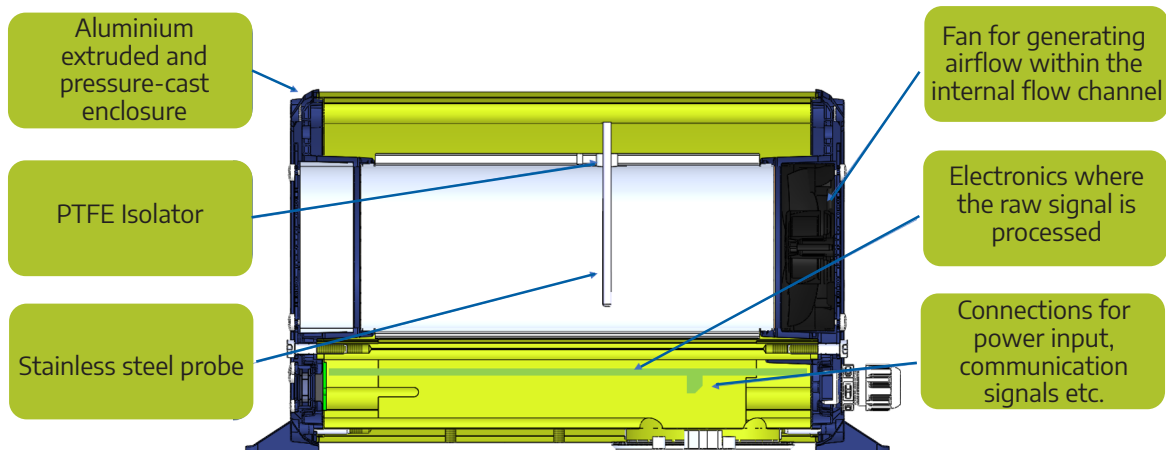
- Continuous real-time dust monitoring in industrial environments
- Low maintenance and robust
- Easy start-up and commissioning
- Wide measurement range
- Internal self-monitoring for failsafe operation
- Fast response time
- No sample handling required
- DumoPro Ex is suitable for zones 20, 21 and 22

Sintrol DumoPro is a powerful tool for measuring dust concentration in industrial environments because of its high sensitivity to particulates. The field proven state-of-the-art measurement technology is tolerant to sensor contamination making it reliable in a wide variety of dust detection applications. DumoPro utilizes the Sintrol Inductive Electrification technology providing a wide measuring range.

Benefits:

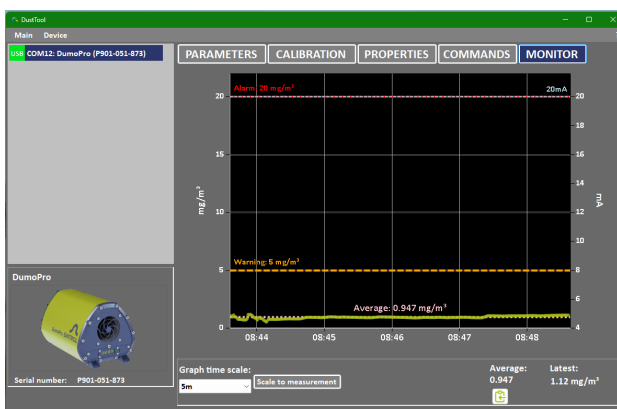
- Early detection of dust events
- Workplace dust monitoring
- Equipment and worker protection
- Supports good housekeeping practice
- Helps mitigate the risk of dust explosion
- Product loss prevention
- Long term low maintenance dust monitoring
- Can be used in hazardous locations

The robustness of DumoPro makes it a safe choice for dust monitoring in rugged industrial environments. Common industries are flour and sugar mills, mining, wood products, grain handling, chemical, power plants or any bulk and powder handling facility. Some common applications include: health & hygiene, equipment safety, good housekeeping, dust explosion risk mitigation, HazLoc monitoring and the detection of unwanted events.



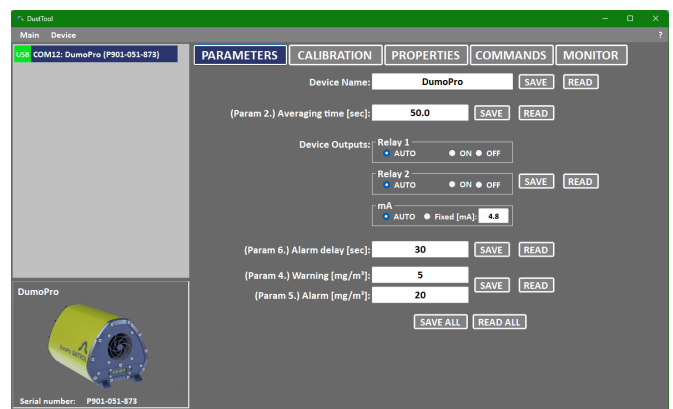
Sintrol's Unique Auto Setup Function

The Auto Setup function is a unique Sintrol Dust Monitor feature which allows for a simple user-friendly setup. During the Auto Setup procedure, which is done in normal process conditions, the dust monitor will automatically adapt to the present conditions and set the measuring range and alarms accordingly.



Dust Tool

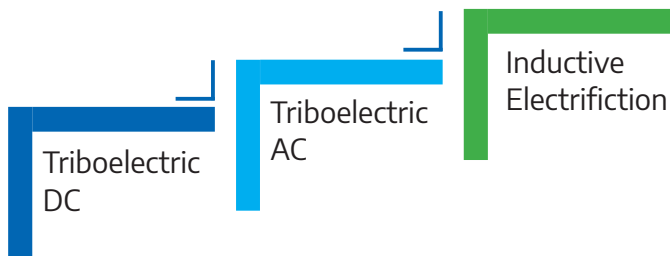
DumoPro can be managed and parameterized with the DustTool PC Software. This offers a convenient platform to view the measurement results, to initiate the Auto Setup and adjust the parameters of the monitor.



Inductive Electrification

Since 1993, Sintrol has become a globally recognized dust monitor supplier with over 20 000 installations in more than 50 countries. The measuring principle has evolved into a proven standard for dust monitoring needs.

Inductive Electrification Technology

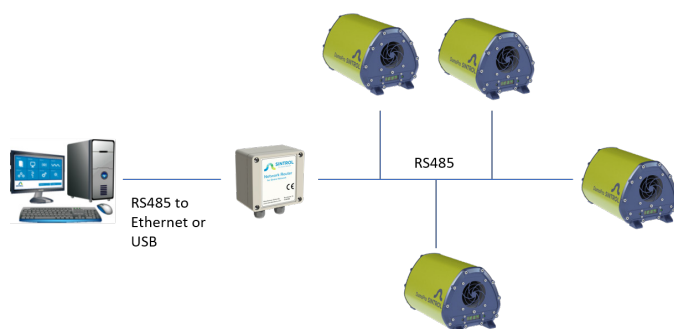


Ambient air is drawn through the measurement chamber producing a steady constant flow.

Particulate matter flowing through the chamber will interact with the sensor rod causing small electrical charge to pass between the particulate and sensor. These small electrical charges provide the signal monitored by the electronics. The generated signal is proportionate to the ambient dust levels.

Sintrol Network and DustLog Software

Sintrol devices can be networked via a RS-485 network. By using the Sintrol network, it is easier to connect, track, manage and control a network of dust monitors. DustTool software enables the operator to see and control all monitors in the network, providing access to change parameters, adjust the alarms and dial in the measurement data. Once all the instruments are measuring as desired, DustLog 10 can be utilized to log the data and give operators an overview of the plants dust levels. DustLog 10 features include comprehensive real-time monitor views of all dust levels, data storage, reporting and off-site data storage.

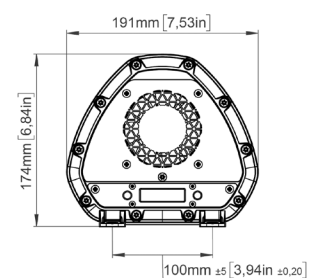
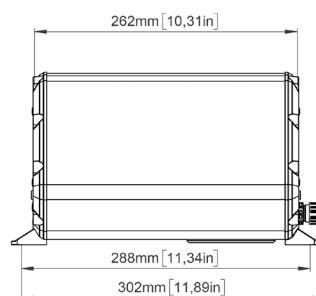



Reliable and user friendly

In reference to multiple international safety codes, DumoPro is equipped with the below safety features:

- Malfunctions are indicated in the way that relays will relax, the mA output will show 22 mA and LEDs will blink.
- The fan speed is monitored and will trigger an error if the fan is blocked or slowed down.
- A periodic Zero and Span check and correction is a standard function of DumoPro.
- Voltage supply tolerant to +/- 20 % voltage changes.
- During Auto Setup the LED will blink green and a countdown is shown on the display.
- In hazardous locations Auto Setup can be triggered without opening the instrument.
- It is possible to perform a simple functional test after installation:
 - A properly grounded DumoPro will show no reaction on the measurement by touching it with your hand.
 - DumoPro will react by tearing a piece of paper apart in front of the inlet.
- Dirty or wet sensors may become grounded which distorts the signal. These incidents are detected, and an error signal is prompted.
- On-board display for direct verification of dust levels or mA output.
- Instrument parameters and settings easily accessible with Sintrol DustTool software

DumoPro can be installed anywhere in the production process where the determination of the dust levels is critical or informative. DumoPro makes the task of dust monitoring easier, faster and more reliable than ever before.



Product Name	DumoPro PC901600 / DumoPro Ex PC901080
Measurement objects	Total Suspended Particles (TSP)
Measurement range	Detection Limit 0.1 mg/m ³ Maximum Range up to several g/m ³
Measurement principle	Inductive Electrification
Protection code	IP66
Power supply	24 V DC + - 20%
Power consumption	Up to 10 W
Output signals	<ul style="list-style-type: none"> Two configurable alarm outputs (100 mA @24 V DC) Isolated 4 - 20 mA output loop, up to 250 Ω loop resistance, Namur NE43 compliant alarms
Communication interface	<ul style="list-style-type: none"> Serial communication RS485, USB
Communication protocol	<ul style="list-style-type: none"> Modbus RTU (RS-485) Sintrol network (USB and RS-485)
Alarm settings	Set by Auto Setup based on average measured dust level: 5 times and 20 times of reference dust level. User adjustable
Signal averaging time	Default at factory: 100 s, Adjustable from 0-6000 s.
Alarm delay time	Default at factory: 30 s, Adjustable from 0-60 000 s.
Alarm hysteresis time	Default at factory: 0 s, Adjustable from 0-25 s.
AMBIENT CONDITIONS	
Running temperature	-40°C to +60 °C (-40 °F to 140 °F)
Humidity	Max 95 % RH (non-condensing)
MATERIALS AND DIMENSIONS	
Weight	4.2 kg (9.3 lbs)
Enclosure / housing	Aluminum enclosure, stainless steel cover plates and probe (AISI 316L).
Dimensions (mm):	288 (L) x 191 (W) x 174 (H)
Ordering information	PC901600 DumoPro PC901080 DumoPro Ex
Options	MC900222 Installation Bracket MC900237 Installation Arm FC900047 DumoPro Adapter M16 Male thread to 1/2" NTP female thread FC900162 ATEX/IEC Cable Gland for DumoPro Ex PC900091 Sintrol Network Router & DustLog Software
Hazardous Location Approvals DumoPro Ex	IEC/ATEX:  II 1 D Ex ia ta IIIC T200 93°C Da Tamb -30°C to +60°C US: Zone 20 AEx ia ta IIIC T93°C Da Ta = -30°C to +60°C CAN: Ex ia ta IIIC T93°C Da Ta = -30°C to +60°C

SINTROL GROUP

OFFICES

FINLAND
WORLDWIDE
Head Office

Helsinki
Tel. +358 9 5617 360
info@sintrol.com
www.sintrol.fi
www.sintrol.com

INDIA
Representative
Office

New Delhi
Tel. +91 9811676061
india@sintrol.com

CHINA
Representative
Office

Beijing
Tel. +86 1 87888681
china@sintrol.com
cn.sintrol.com

JAPAN
Representative
Office

Tokyo
Tel. +81 90 8585 1301
japan@sintrol.com