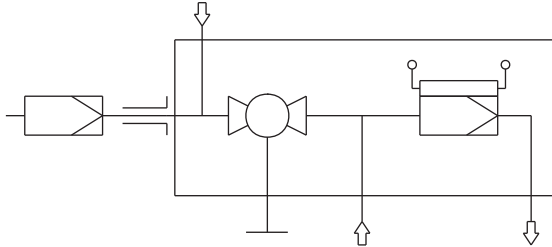



Sample gas probe GAS 222.21 Atex

Flow Diagram



Description:

- Heated sample gas probe with in-situ/ downstream filter and weather protection shield
- Filter can be replaced without tools
- Effective insulation and protection shield
- Self/regulating up to 90 °C
- Dust concentration up to 2 g/m³ with in-situ filter
- Dust concentration up to 10 g/m³ with in-situ filter and downstream filter
-  This probe is approved for use in Zone 1, 21 and for gas sampling from Zone 0, 20 (hazardous areas)*.



Technical Data:

- Material: 1.4571, ball valve 1.4408
- Seals: PTFE/Graphite/1.4404 and see filter elements
- Max. working pressure: 6 bar
- Max. flow 1000 l/h
- Max. inlet temperature process media 135 °C
- Voltage: 230 V, 50/60 Hz
or 115 V, 50/60 Hz,
- Temperature: self-regulating approx. +90 °C
- External circuit-breaker Type C:
2 A for 230 V, 50/60 Hz
3 A for 115 V, 50/60 Hz
- Ambient temperature -20 to +50 °C
- In-situ or/and downstream filter
- Ex-marking of the basic unit *:
1GD / 2GD T4 T130 °C

Order information: Base units:

- GAS 222.21 Atex 230 V p/n 4622221X2
- GAS 222.21 Atex 115 V p/n 4622221X1

Options:

To customize the base unit to meet the needs of any application, please refer to data sheet DE461099 "Accessories for Gas Sample Probes".

- Various probe tubes
- Unheated extensions
- Filters
- Calibration gas port
- ANSI flange 3"
- Pneumatic actuator
- Blowback
- Blowback control unit for assembly outside hazardous area

* Please note that installed accessories may change the approved category of the probe. (Regard type plate and operating instructions)

For general information see data sheet "Gas Sample Probes GAS 222" DE461000.

