

BELTSCALE

MODEL BS14x

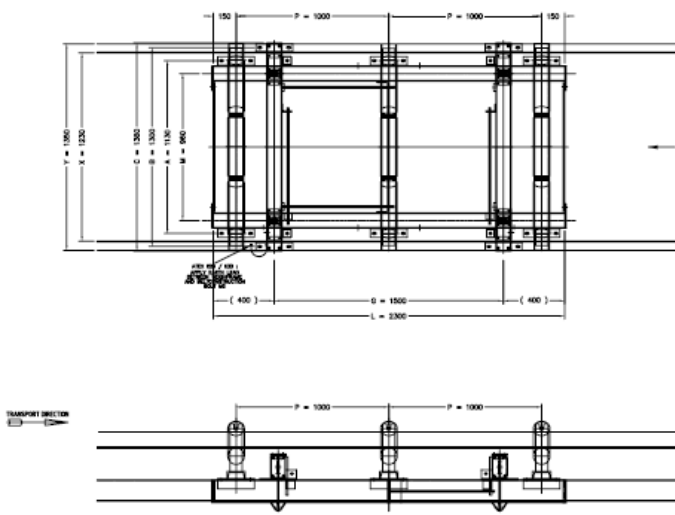
The beltscale model BS14x is used for a different amount of applications, where an high accuracy is required and is especially suitable for approved applications.

The weighframe is tailor made to fit in the conveyor, so that a minimum of modifications on the conveyor is required.

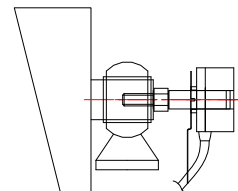
This model is also available in an execution for explosion hazardous areas, suitable for ATEX categories II2D and II3D (zone 21 and 22).



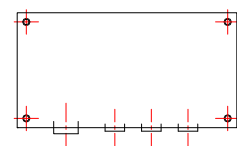
WEIGHFRAME WITH LOADCELL



SPEED PICKUP



JUNCTIONBOX



ASSEMBLY :

Weighframe, model BS14x

- Construction : Outer frame with two loadcell carrier beams (with in total four loadcells), which are mounted across the stringers of the belt conveyor. Hereunder the inner frame (weighed) is mounted as a free floating platform, on which two or more idler sets are placed.
- Mounting : The weighframe fits in any kind of standard conveyor and is assembled in our factory to one piece, so it can be mounted with only 8 bolts into the conveyor.
- Material : Steel St.37 / SS304
- Finishing : Powder coating, colour RAL 3020 / Shot blasting SA 2.5
According to procedure:
- Shot blasting SA 2.5
 - One layer epoxy powder coating, weather proof type
 - Thickness minimum 80 µm

Loadcell (4x), model B3G-9363

- Type loadcell : Tension force transducer
- Execution : Hermetically sealed, IP67
- Material : SS

Junctionbox JBL

The Junctionbox is placed near the weighframe.

- Dimensions : 254 x 180 x 90 mm (l x w x h)
- Material : Shockproof reinforced polycarbonate
- Loadcells : up to 4 pieces (4- of 6-wires)
- Speedpickup : yes (2- or 3-wires)

Speed Pick-Up, model SPU 260 / 5826

This digital speed pickup is mounted directly on the axle end of the none driven drum.

- Housing : Aluminium, IP64 / SS304, IP66

Electronics

See applicable datasheet.