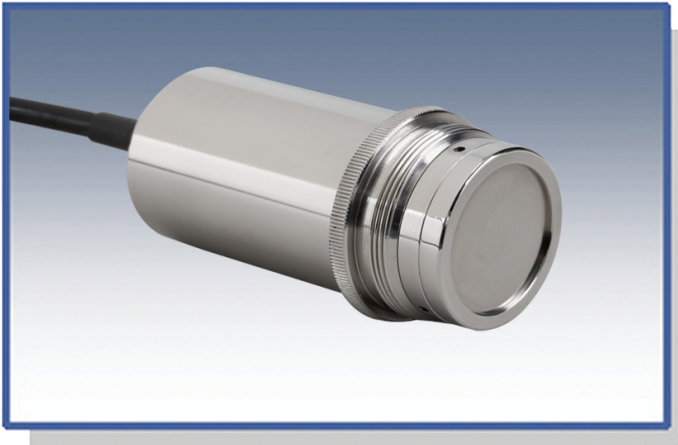




Electronic Transmitter Pressure, Level, and Vacuum

PT/EL CV Series



- $\pm 0.25\%$ FS Accuracy
- Ranges 5"WC-300 psig, Vacuum & Absolute
- 4-20 mA, 2-wire output
- FM and CSA Approved*, 3A Sanitary
- Polyurethane or Teflon FEP cable



PMC Electronic Pressure Transmitters accurately measure pressure, level, and vacuum in processes where clogging of the diaphragm face is a particular concern. The small, 1½" diameter of the transmitter allows installation flush with the inside wall of pipes 3" in diameter and larger. This feature eliminates the usual pocketing problems encountered with conventional flange-mounted and recessed-diaphragm transmitters. PMC incorporates a high-precision ceramic capacitive pressure sensor to ensure accuracy and durability. This type of sensor is ideally suited for high-wear applications. **The PT/EL Series** of transmitters provides overpressure protection of up to 10 times the full scale range. The CV configuration allows customers to specify custom lengths of cable to be supplied with the transmitter. A choice of vented Polyurethane or Teflon FEP cable is available. Teflon FEP cable offers improved chemical resistance for more demanding applications.

3A Sanitary version (SAN) provides your choice of certified sanitary process connections including weld-on nipple, NPT threaded nipple, or Tri-Clamp. **Double Ring version (DR)** provides your choice of process connections including weld-on nipple, or NPT threaded nipple. See the Process Connections Data sheet for a detailed list and description of options.

*FM & CSA approved for use in hazardous locations, Class I,II,III, Division 1, Groups A,B,C,D,E,F, & G rated.

Pneumatically Operated Transmitters Also Available

STANDARD SPECIFICATIONS

Full Scale Ranges

0 – 5"WC to 0 – 300 psi gauge
 ± 5"WC to ± 400"WC Compound
 0 - 3"Hg to 0 - 30"Hg Vacuum
 0 - 15 psi to 0 - 150 psi absolute

Ranges below 40"WC, absolute ranges, and/or compound ranges available with ceramic diaphragm only

Static Accuracy

± 0.25% of Full Scale
 Combined non-linearity, hysteresis, and repeatability

Overpressure

10X for Full Scale Ranges up to 100 psi
 4X for Full Scale Ranges over 100 psi

Compensated Temperature Range

Ceramic Diaphragm: -4°F to 175°F (-20°C to 80°C)
 Other Diaphragms: 14°F to 175°F (-10°C to 80°C)

Operating Temperature Range

Ambient: -40°F to 175°F (-40°C to 80°C)
 Process: -40°F to 250°F (-40°C to 125°C)

Temperature Effects

Ceramic Diaphragm:
 Thermal Zero Shift: ±0.0075%/°C
 Thermal Span Shift:
 ± 0.005%/°C for ranges < 6 psi
 ± 0.003%/°C for ranges 6 psi and above
 Other Diaphragm Materials:
 Temperature Error Band for 14°F to 175°F (-10°C to 80°C) is typically better than ±1.5% (TEB) for ranges greater than 6 psi and ±3.0% for ranges < 6 psi

Electrical

Output: 2-wire, 4-20 mA
 Supply Voltage: 10 to 35 VDC nominal supply

Zero Setting

± 5% FS, potentiometer adjustment

Span Setting

± 15% FS, potentiometer adjustment

Cable

CV/P - 10' Polyurethane
 CV/T - 10' Teflon FEP

ORDERING INFORMATION

PT/EL CV Series Electronic Transmitter Pressure, Level, and Vacuum

When ordering please specify the following:

MODEL PMC - PT/EL	
SAN	Sanitary version
DR	Double Ring version
Range	Specify psi, " WC, bar, absolute, gauge, etc.
Diaphragm	
Ha	Havar
Hc	Hastelloy C
Ta	Tantalum
Cer	Ceramic
Termination	
CV/P	Polyurethane Cable
CV/T	Teflon FEP Cable

(1) Select (2) Specify (3) Select (4) Select

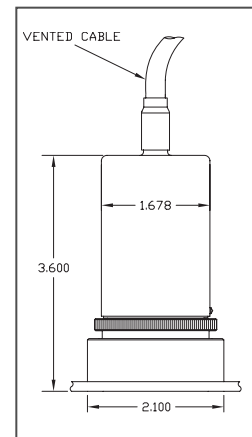
Order Code Example: PMC-PT/EL-SAN-100psig-Hc-CV/P

- (1) Model: PMC-PT/EL-SAN
- (2) Range: 100 psi gauge
- (3) Diaphragm Material: Hastelloy C
- (4) Electrical Termination: SS cover with 10' of Polyurethane cable

OPTIONS

- Remote Electronics
- Terminal Head
- LCD Display
- Submersible Versions
- Process Connections
 Sanitary, Flush-Mount, Tri-Clamp, Flange and Threaded Process Connections available

Contact PMC for other options and accessories



All measurements shown in inches

PMC adopts a continuous development program which sometimes necessitates specification changes without notice.

HEAD OFFICE



Process Measurement & Controls, Inc.

11 Old Sugar Hollow Road
 Danbury, CT 06810 U.S.A.
 Tel: 203-792-8686
 Fax: 203-743-2051
 Email: sales@pmc1.com
www.pmc1.com

Represented By: