

Mounting Recommendation

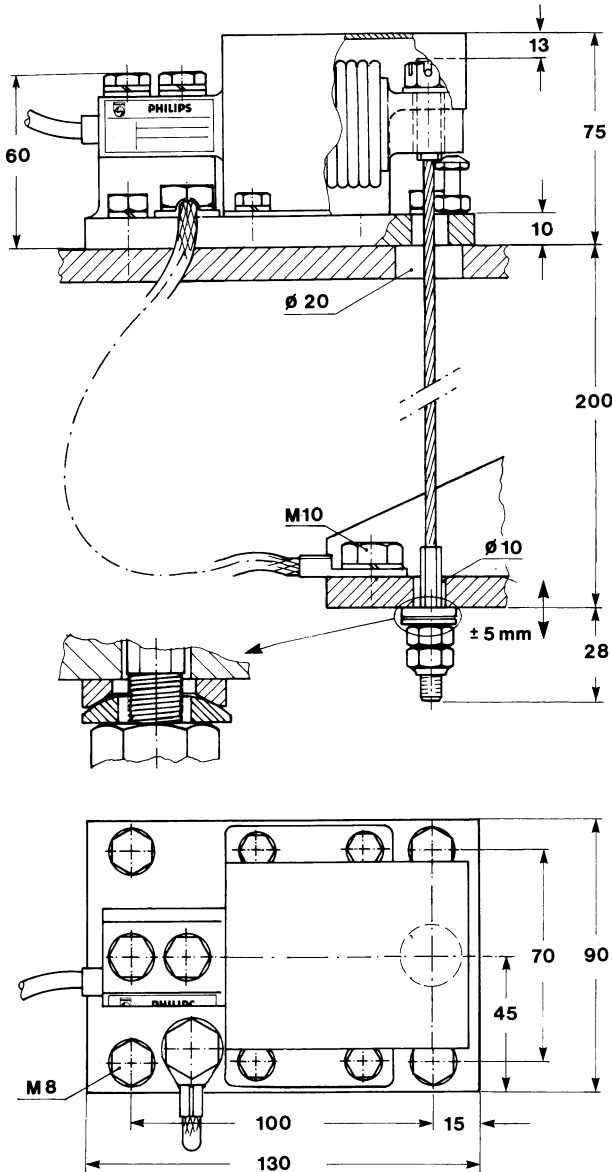
It is recommended that the load cell is installed horizontally on a stable and flat supporting structure. To prevent possible damage due to overloads, the overload stop should be used.

The load bearing connection of the object to be weighed should also be aligned horizontally to avoid parasitic (unwanted) forces.

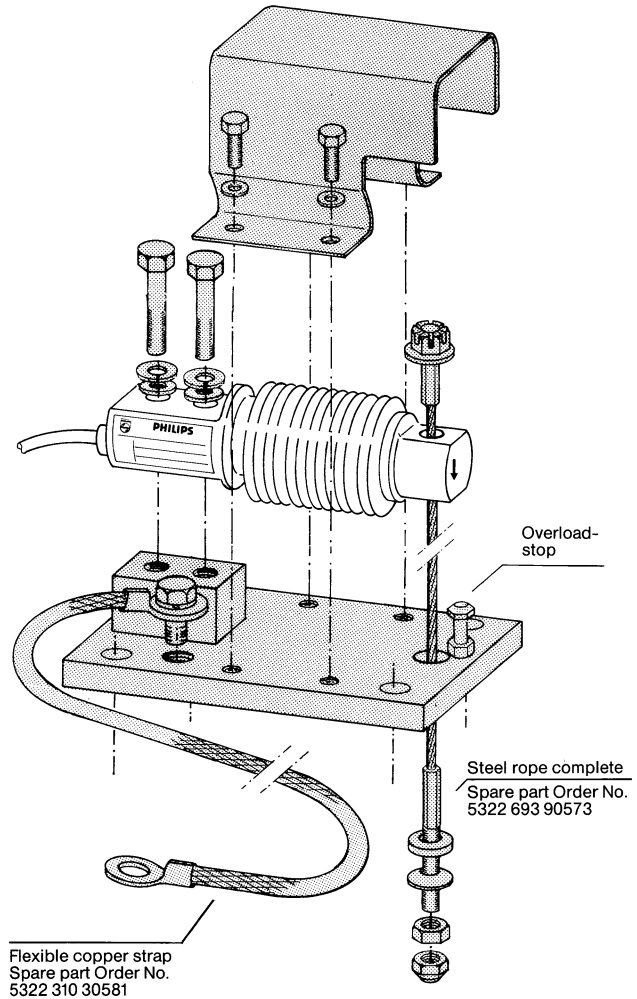
Standard mounting kit PR 6007/00 simplifies installation and service. The load bearing element is specially designed

to meet the requirements of industrial installations. The influence on the weight measurement affected by normal thermal expansion and contraction of the weighing construction remains negligible. Overload stop is built into the mounting kit.

Tighten the suspension parts so they cannot loosen accidentally under any circumstances. Loads may only be suspended from the load cell if a safety device is fitted. But care must be taken to insure that no mechanical forces are transferred to the load cell.



Mounting kit PR 6007/00 with load cell PR 6207. Same dimensions for nominal loads from 10 kg ... 200 kg. Destructive load (mechanical yield point) > 8 kN.



Mounting kit, type PR 6007/00 N. Order No. 9405 360 07001 in normal steel.
Surface protection: zinc plating and yellow chromated.
Mounting kit, type PR 6007/00 S. Order No. 9405 360 07002 in stainless steel.
1.4301 (DIN 17440), 304S25 (B.S.)
Suitable for PR 6207 load cells with nominal loads from 10 kg ... 200 kg.
Destructive load of steel rope (mechanical yield point) > 8 kN
weight net / shipping 1.7 kg / 2.1 kg.