



WE302D



Electronics for dynamic applications

**Beltscale
Screwweigher
Impact Flow Meter system**

WE302D



The universal electronics for dynamic applications

Stainless Steel Housing IP65

Suitable for harsh environment weighing locations. With mounting brackets for desk-top or wall-mount installation. Integrated power supply unit, sealed cable glands for all cable connections.

Keyboard

With function keys for zero setting of totals, taring and entering data for a batchfunction. Alphanumeric entries possible via multiple key assignment.

Universal Use

Suitable for difficult environmental conditions and locations with high hygienic standards, as in the food, pharmaceutical and chemical industry.

High Operational Security

Fast and error-free operation is ensured by a high-contrast alphanumeric LCD for the indication of weight, IDs and operator prompts in combination with an easy-to-use keyboard for the entry of manual tare and additional data.

Weighing Electronics

WE302D connects to one scale with up to 16 loadcells. Approved for legal trade according to MID (European). Beltscales class 0.5, 1 and 2.



Alphanumeric Display

20-character back-lit LCD, 14mm high, for the indication of weight, operator prompting and

Power Supply

110 – 240VAC (integrated) for stationary use or 12 – 30VDC (integrated) for mobile use.

Program

Display of actual flow, totals, beltspeed, beltload and weight. If the batch function is installed, also the necessary batch data is displayed or prompted for entry.

Plug-on modules are used to set WE 302 up for applications of varying complexity:

Additional I/O

Digital I/O module with two inputs (for tarring, reset totalizer) and two outputs (for total pulse and status). Analogue output module (for actual flow).

Dosing

A simple batch function can be handled, where the start/stop command and starting/stopping of the transport system can be controlled by the optional I/O module..

Transfer data

Actual flow via analogue output or serial interface. Total register via pulse output or serial interface.

Printing

via optional serial interface. Actual flow or totals register.

Data Transmission To PC

via optional serial interface.

Profibus-DP

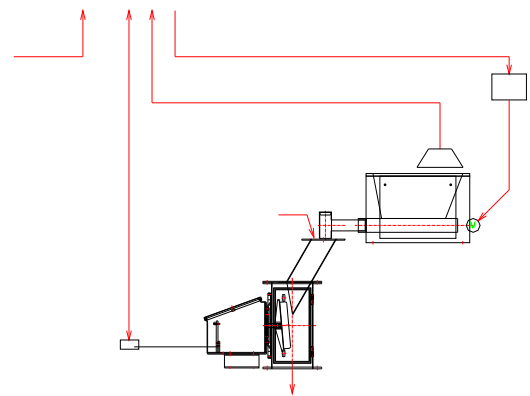
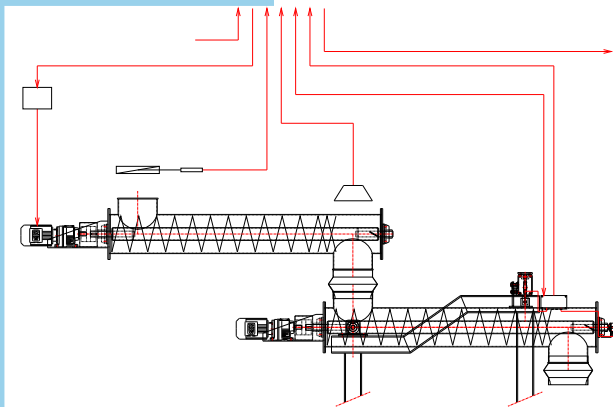
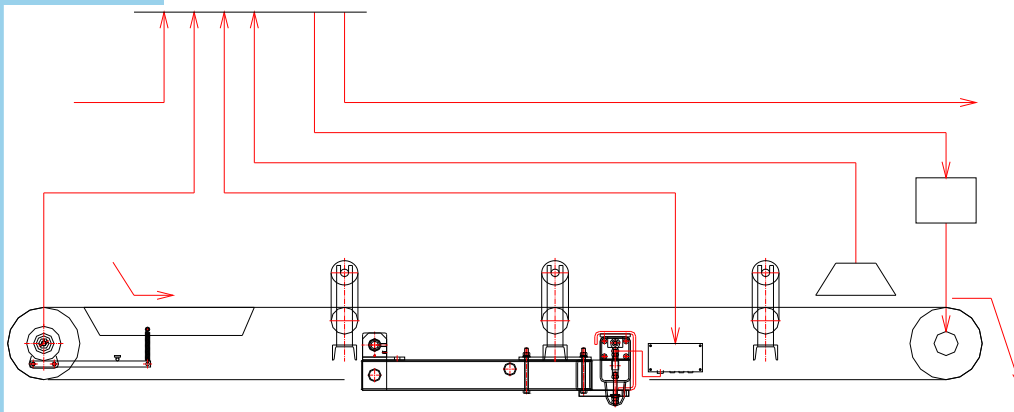
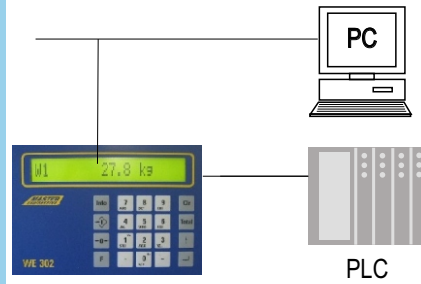
optional.

Typical WE302D Applications

DYNAMIC

Dynamic weighing and dosing :

- Beltscale
- Screwweigher
- Impact Flow Meter System



The universal electronics for dynamic applications

Construction

Compact stainless steel housing protected to IP65, for desk-top, wall-mount and column-mount installation, suitable for harsh environments, all cable connections through sealed cable glands.

Display and keyboard

20-character alphanumeric back-lit LCD, height of characters 14mm, for indication of weight and operator prompts and calibration.

Sealed membrane keyboard with tactile feedback, with numeric keys for the input of tare weights and additional information, scale keys for zero setting and taring and function keys.

Input of alpha characters via multiple assignment of numeric keys.

Weighing electronics

Integrated signal amplifier for the connection of up to 16 strain gauge loadcells. Internal resolution 524,000d, 50 updates per second, smallest loadcell signal 0.33µV/e.

Technical data

Calibration

Clear operator prompts for all steps of the calibration sequence.

Calibration with material or by letting the instrument calculate the factors itself.

Electrical connection

110(-15%) to 240(+10%)VAC, 50/60Hz via integrated power supply, option: 12 – 30VDC

Power consumption max. 15VA.

Operating temperature

- 10°C to + 40°C, 95% relative humidity, non-condensing.

Approved for legal trade

MID approval (European)
Class 0.5, 1 and 2

Options

Serial Interface

selectable RS232, 20mA CL, RS422 or RS485, configurable as:

- continuous data transmission
- printout or data transmission on serial command
- printout or data transmission on operator command

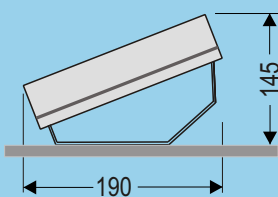
2 digital inputs and 2 digital outputs

optoisolated, 24VDC, outputs for total puls and status or for simple batch function, inputs for release and taring or for start/stop of the batch.

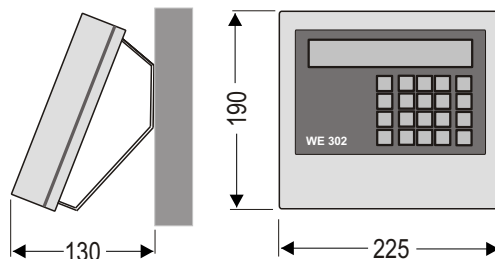
Profibus-DP

Plug & play with GSD file

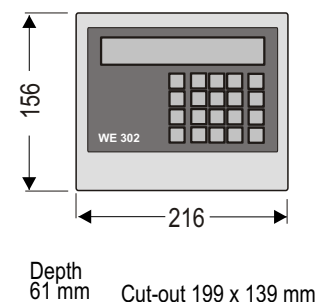
Desk-top



Wall-mount



Panel-mount



Dimensions in mm



WE 302 conforms to
EN 45501 - EN 50081-1 -
EN 50082-1 - EN 60950

Subject to change without notice

WE302D-100101-e

Master Engineering B.V.

Postbus 58
NL - 6666 ZH Heteren
Weiland 11
NL - 6666 MH Heteren
The Netherlands

Tel.: +31 (0) 26 472 1319
Fax: +31 (0) 26 472 2204
E-Mail: info@masterengineering.nl
Web: www.masterengineering.nl